

**LES PALMIERS**

Vos besoins. Vos idées... Notre métier

15, PROMENADE DU CAP - 06190 ROQUEBRUNE CAP MARTIN

RENTALS +33 (0)4 93 35 50 60 (PRESS 1)

SALES +33 (0)4 93 35 50 60 (PRESS 2)

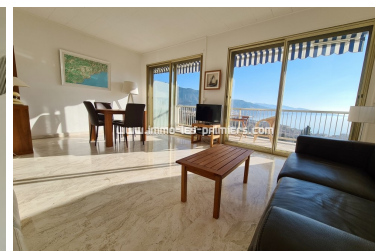
## SEASONAL RENTAL

## CONTACT US

INCLUSIVE AGENCY FEES

## 2 rooms Cap Martin district 55 m<sup>2</sup>

### ROQUEBRUNE CAP MARTIN



### PROPERTY DESCRIPTION

<b>Reference</b>	19101
<b>Apartment</b>	2 pièces
<b>Standing</b>	Normal
<b>Sight</b>	Sea/mont.
<b>Outdist. sea</b>	1500
<b>Outdist. trade</b>	100
<b>Livable surface</b>	55 m <sup>2</sup>
<b>Surface terrace</b>	20 m <sup>2</sup>
<b>Adult bed</b>	2
<b>Bed child</b>	2
<b>Site conveys</b>	1

<b>Type of vehicle location</b>	Private indoor parking
<b>Floor</b>	3
<b>Service</b>	,
<b>Cellar</b>	No
<b>Guarantee</b>	Compulso.
<b>Fee arranges</b>	Included
<b>Handicapped ac.</b>	No
<b>Exposure</b>	NE / SO

## 2 rooms Cap Martin district 55 m<sup>2</sup>

We offer you for rental for your holidays a 2 room apartment close to the shops on the Cap Martin district in a residence with swimming pool, tennis court and private parking. This bright apartment offers you views of the sea, Menton and Italy and has direct access to the Principality of Monaco.

An apartment composed of an entrance, a living room, an independent kitchen, a bedroom, a shower room, an independent toilet, two terraces, a parking.

SEASONAL RENTAL APARTEMENT 2 PIÈCES NORMAL SEA/MONT.

PRIVATE INDOOR PARKING 3ÈME FLOOR ROQUEBRUNE CAP MARTIN 1500M SEA

NE / SO

### ENERGY PERFORMANCE DIAGNOSTICS

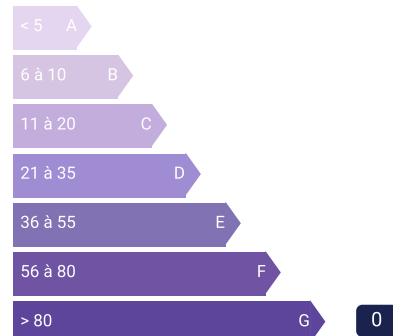
#### ENERGETIC ASSESSMENT G

Low-cost housing

Energy-intensive housing  
kWhEP/m<sup>2</sup>.for

#### BALANCE GREENHOUSE GASES G

Low GHG emissions

High GHG emissions  
kWhEP/m<sup>2</sup>.for/li>