



**LES PALMIERS**  
Vos besoins. Vos idées... Notre métier

15, PROMENADE DU CAP - 06190 ROQUEBRUNE CAP MARTIN

RENTALS +33 (0)4 93 35 50 60 (PRESS 1)

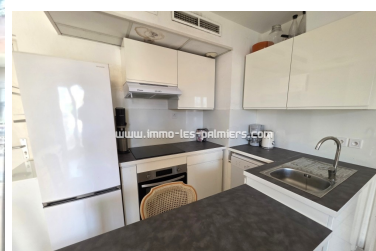
SALES +33 (0)4 93 35 50 60 (PRESS 2)

## SEASONAL RENTAL

## CONTACT US

**INCLUSIVE AGENCY FEES**

## 2 rooms Beach area 36 m<sup>2</sup> ROQUEBRUNE CAP MARTIN



### PROPERTY DESCRIPTION

<b>Reference</b>	29501
<b>Apartment</b>	2 pièces
<b>Standing</b>	Normal
<b>Sight</b>	Released
<b>Outdist. sea</b>	150
<b>Outdist. trade</b>	100
<b>Livable surface</b>	36 m <sup>2</sup>
<b>Surface terrace</b>	14 m <sup>2</sup>
<b>Adult bed</b>	2
<b>Bed child</b>	1
<b>Site conveys</b>	1

**Type of vehicle location** Private indoor parking

<b>Floor</b>	4
<b>Service</b>	,
<b>Cellar</b>	No
<b>Guarantee</b>	Compulso.
<b>Fee arranges</b>	Included
<b>Handicapped ac.</b>	No
<b>Exposure</b>	Nord-est

### 2 rooms Beach area 36 m<sup>2</sup>

Your real estate agency offers you a 2-room apartment for your holidays in a residence with a swimming pool. This air-conditioned apartment has Wi-Fi, private parking and is located close to all amenities. An apartment composed of a living room with American kitchen, a bedroom, a bathroom with toilet, a terrace, private parking.

SEASONAL RENTAL

APARTEMENT

2 PIÈCES

NORMAL

RELEASED

PRIVATE INDOOR PARKING

4ÈME FLOOR

ROQUEBRUNE CAP MARTIN

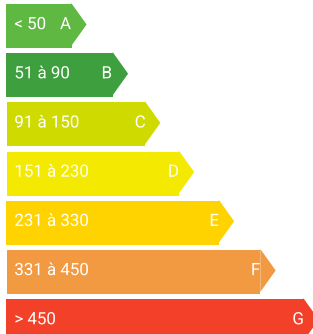
150M SEA

NORD-EST

### ENERGY PERFORMANCE DIAGNOSTICS

#### ENERGETIC ASSESSMENT G

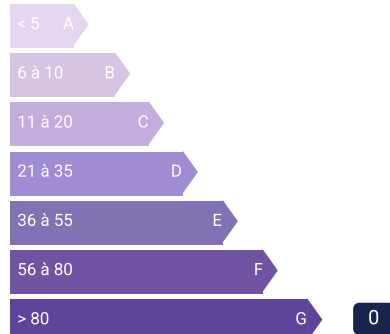
Low-cost housing



Energy-intensive housing  
kWhEP/m<sup>2</sup>.for

#### BALANCE GREENHOUSE GASES G

Low GHG emissions



High GHG emissions  
kWhEP/m<sup>2</sup>.for/li>