



**LES PALMIERS**  
Vos besoins. Vos idées... Notre métier

15, PROMENADE DU CAP - 06190 ROQUEBRUNE CAP MARTIN

RENTALS +33 (0)4 93 35 50 60 (PRESS 1)

SALES +33 (0)4 93 35 50 60 (PRESS 2)

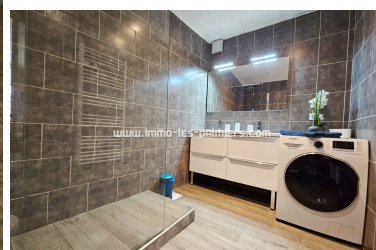
## SEASONAL RENTAL

### CONTACT US

INCLUSIVE AGENCY FEES

## 4 rooms in Menton 73 m<sup>2</sup>

### MENTON



#### PROPERTY DESCRIPTION

<b>Reference</b>	26601
<b>Apartment</b>	4 pièces
<b>Standing</b>	Normal
<b>Sight</b>	Without
<b>Outdist. sea</b>	600
<b>Outdist. trade</b>	400
<b>Livable surface</b>	73 m <sup>2</sup>
<b>Surface terrace</b>	n.a.
<b>Adult bed</b>	4
<b>Bed child</b>	2
<b>Site conveys</b>	No
<b>Floor</b>	0
<b>Service</b>	No
<b>Cellar</b>	No
<b>Guarantee</b>	Compulso.
<b>Fee arranges</b>	Included
<b>Handicapped ac.</b>	No
<b>Exposure</b>	Nord-est

#### 4 rooms in Menton 73 m<sup>2</sup>

Your real estate agency offers you a spacious 4-room apartment with internet in Menton. This very quiet apartment is close to all amenities and the city center of Menton.

An apartment composed of an entrance, a living room, an independent kitchen, three bedrooms, a bathroom with toilet.

SEASONAL RENTAL   APARTEMENT   4 PIÈCES   NORMAL   WITHOUT   R.D.C.

MENTON   600M SEA   NORD-EST

#### ENERGY PERFORMANCE DIAGNOSTICS

##### ENERGETIC ASSESSMENT G

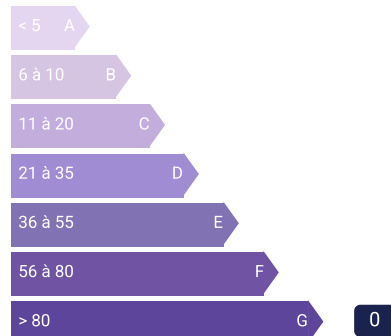
Low-cost housing



Energy-intensive housing  
kWhEP/m<sup>2</sup>.for

##### BALANCE GREENHOUSE GASES G

Low GHG emissions



High GHG emissions  
kWhEP/m<sup>2</sup>.for/li>