

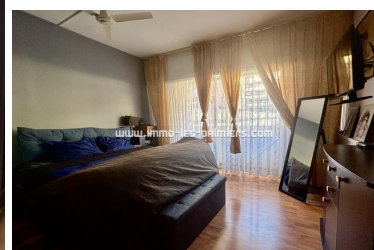
**LES PALMIERS**

Vos besoins. Vos idées... Notre métier

15, PROMENADE DU CAP - 06190 ROQUEBRUNE CAP MARTIN

RENTALS +33 (0)4 93 35 50 60 (PRESS 1)

SALES +33 (0)4 93 35 50 60 (PRESS 2)

**SALES****350 000 €****INCLUSIVE AGENCY FEES****Seaside apartment 64 m<sup>2</sup>**  
**ROQUEBRUNE CAP MARTIN****PROPERTY DESCRIPTION**

<b>Reference</b>	830
<b>Apartment</b>	2 pièces
<b>Standing</b>	Good
<b>Sight</b>	Without
<b>Livable surface</b>	64 m <sup>2</sup>
<b>Surface terrace</b>	n.a.
<b>Site conveys</b>	1
<b>Type of vehicle location</b>	Private indoor parking
<b>Floor</b>	0
<b>Service</b>	,
<b>Heating</b>	Individual
<b>T. heating</b>	
<b>Cellar</b>	Yes
<b>Loads</b>	2372 €
<b>Tax land</b>	1177
<b>Tax dwelling</b>	Undisclosed
<b>Handicapped ac.</b>	No
<b>Exposure</b>	Sud-est

**CO-OWNERSHIP**

<b>Number of batches</b>	Undisclosed
<b>Loads</b>	2372 €

**Seaside apartment 64 m<sup>2</sup>**

SALES

APARTEMENT

2 PIÈCES

GOOD

WITHOUT

PRIVATE INDOOR PARKING

R.D.C.

ROQUEBRUNE CAP MARTIN

10M SEA

SUD-EST

**ENERGY PERFORMANCE DIAGNOSTICS****ENERGETIC ASSESSMENT C**

Low-cost housing

&lt; 50 A

51 à 90 B

91 à 150 C 143

151 à 230 D

231 à 330 E

331 à 450 F

&gt; 450 G

Energy-intensive housing  
kWhEP/m<sup>2</sup>.for**BALANCE GREENHOUSE GASES C**

Low GHG emissions

&lt; 5 A

6 à 10 B

11 à 20 C 19

21 à 35 D

36 à 55 E

56 à 80 F

&gt; 80 G

High GHG emissions  
kWhEP/m<sup>2</sup>.for/li>